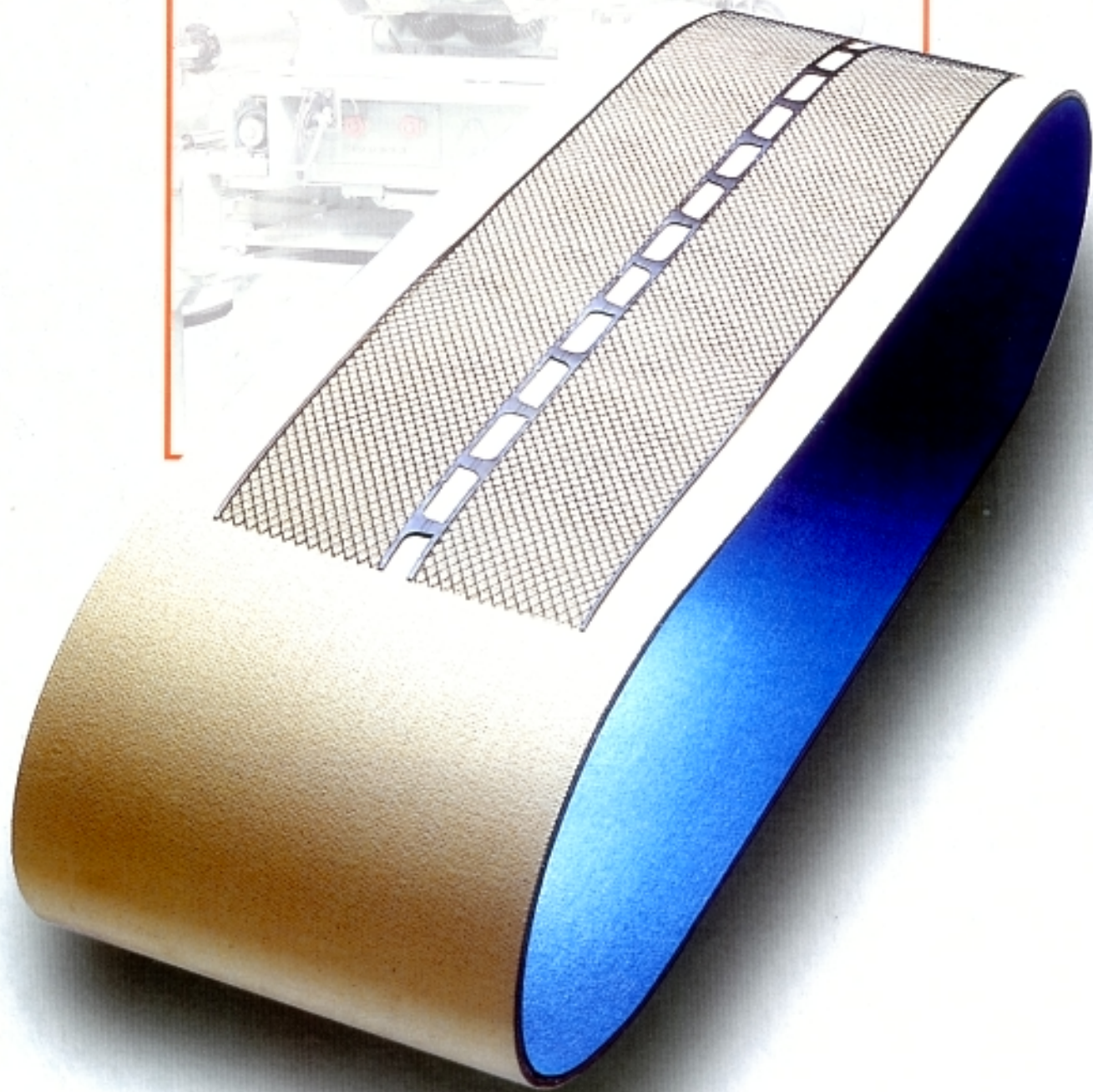
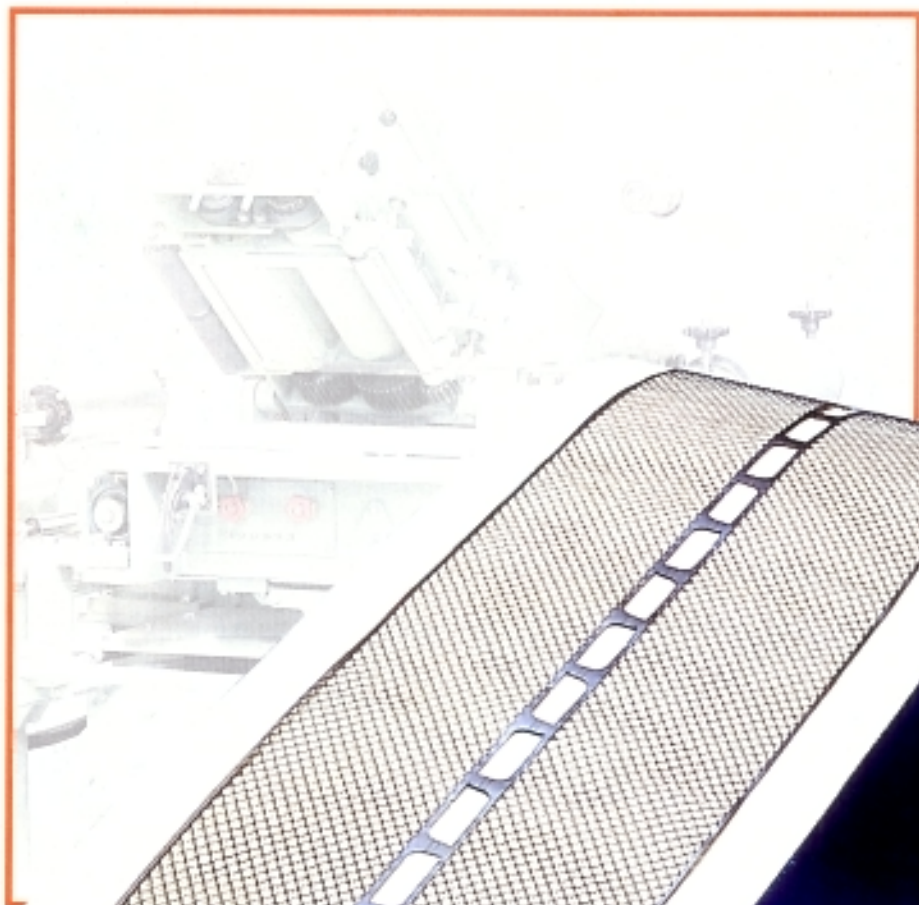




INDUSTRIE TESSILI BRESCIANE



Seamless battery pasting belts

Our pasting machine belts have been developed in close cooperation with battery makers, taking into consideration all the problems connected with pasting process.

Until now all pasting belts were woven open-ended: the two fabric ends were then sewn and glued to get a ring-shaped belt. Now, according to our patented manufacturing system, belts are woven endless. They come out "endless" from the weaving looms and need no further seam or splice. No further joining or glueing is necessary.

The advantages of this construction are obvious:

- the belt, which is made of cotton and synthetic fibres, has the same strength in all its points and the well-known "seam break zone" does no longer exist;
- the belt has the same thickness (about 8 mm) and surface smoothness throughout its circumference and that means a better pasting and an improved active material distribution on battery grids;
- water absorption is uniform in every point of the belt since no glue is used for seam purposes;
- the belt runs straight on pasting machine and doesn't move towards one side or another because it's perfectly cylindrical.

Our seamless belts are heat-set at high temperature under a remarkable stretching load: therefore their dimensional stability is excellent throughout their whole life. Length and width do not change even under heavy working conditions. So belts can work very taut, but in no case do they create slipping problems on pasting machine rolls. The belts are also protected against abrasion by means of a chemical treatment which we have especially developed to this aim. The result of all this is that belt life-time proved to be three-four times as much as the traditional spliced belts.

Most common sizes

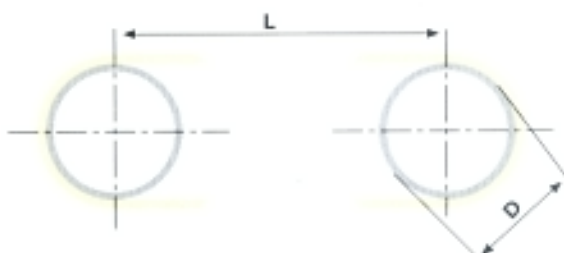
| Length | Width |
|----------|------------|
| 100" | 12" to 18" |
| 101" | 12" to 18" |
| 153 1/2" | 20" to 30" |

Other sizes are manufactured upon customer's request.

Belts for pasting machines

| | |
|--------|-----------------|
| HADI | MAC |
| SOVEMA | WINKEL |
| WIRTZ | JOHNSON CONTROL |

For automotive and industrial batteries.



To avoid misunderstandings when ordering please indicate: centre distance of the belt rollers (L) and diameter of the belt rollers (D) as per drawing hereupon.

Instructions for the use

- After installing the new belt, soak both sides to insure good water penetration.
- Let the belt run for about five minutes without excessive tension (a load of 1-1.5 kg/cm or 5.6-8.4 lbs. per inch is enough) with squeeze rolls in operation and water sprays opened.
- Set the correct belt working tension by adjusting the take-up device and begin to paste.
- Once the pasting has ended, don't forget to wash the belt with water sprays and a fiber brush (avoid metallic brushes). Remove as much oxide as possible from the belt. It should be noted that the structure of pasting belts is specifically designed to reduce belt clogging from oxide.
- For best results keep the belt wet when the pasting machine is not in operation. In this way the belt will not become hard, cracks on its surface will be prevented, and it will maintain its resilience.
- The pasting machine may be stopped with the belt in any position since there is no splice.



INDUSTRIE TESSILI BRESCIANE

ITB - Industrie Tessili Bresciane SpA
Via Isacco 4 - 22046 Merone (Como) Italy
Tel. +39 031 650106 - Fax +39 031 650686
itb@itb-felts.it

